

For Flamco rail R 0 – 4.

Advantages

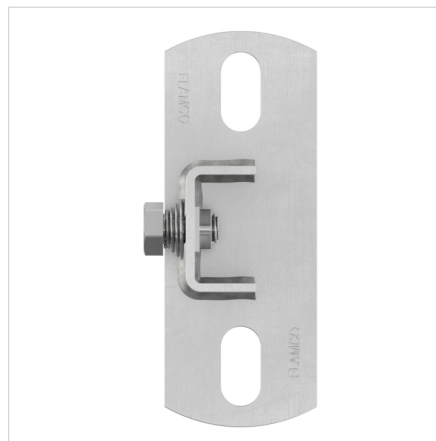
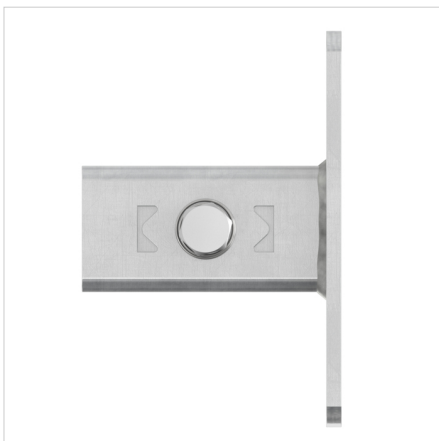
- Easy mounting by pushing and turning the unit in the rail for 45° clockwise.
- Reduced installation time.
- No loose parts like studs, washers and nuts.

{{articlegroup.infousps}}

- Electrolytically zinc-plated.
- Suitable for threaded rod ISO 965-2.
- Safety margin for minimum breaking load (V) = 3.



Description	ClickConnection rail saddle RZ-H90	
Order Code	71807	
GTIN	8712874718074	
Model	<u>ClickConnection RZ-H</u>	
Max. working load	Tensile [N]	3000
	Shear [N]	1000
Max. tightening torque [Nm]	35	
Max. moment [Ncm]	8000	



Classificatie General Data

Etim Group	Mounting systems
Etim Class	Head plate for mounting rail/-profile
Product Name	None
Brand	Flamco
Product Type	Flamco Rail Accessories
Order Code	71807
GTIN	8712874718074

Classificatie Attributen

Suitable for	C-profile
Suitable for ceiling mounting	Yes
Suitable for bracket mounting	Yes
Model	Clamp head plate
Angle	90 - 90 °
Material	Steel
Material quality	Other
Surface protection	Galvanic/electrolytic zinc plated
Colour	Zinc
Stainless steel, pickled	No

Find more information online:

[Packaging data](#)

Laki 14a
10621, Tallinn - ee

T +372 568 838 38
E ee.info@aalberts-hfc.com
I flamco.aalberts-hfc.com/ee